

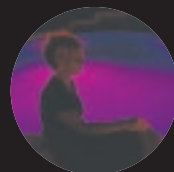


# Introducing **ColorLogic**<sup>™</sup> from Hayward<sup>®</sup>.

More colors.



More choices.



More fun.



 **ColorLogic**<sup>™</sup>

**HAYWARD**<sup>®</sup>

See what happens when the lights go on.

For more information, call 1-888-HAYWARD or visit [www.haywardnet.com](http://www.haywardnet.com).



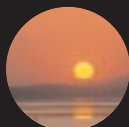
### Fixed Colors:

- Deep Blue Sea
- Afternoon Skies
- Emerald
- Sangria
- Cloud White

### Color Shows:

#### Twilight

1,536 colors constantly change to create a relaxing and sophisticated mood for evening entertaining.



#### Voodoo Lounge

When it's time to really get the party going, uncork over 1,500 colors for an unforgettable night.



#### Tranquility

Set the mood for a relaxing evening with this serene show of calming blues and white.



#### Gemstone

Vibrant blue, green and magenta make this show a jewel of a choice for any pool party.



#### USA!

Shows patriotic spirit on the Fourth of July or anytime with a star-spangled red, white and blue show.



#### Mardi Gras

Kids and adults alike will love the 36 fast-changing colors and carnival atmosphere created by this cheerful show.



#### Cool Cabaret

Hit the disco and turn your pool into a nighttime hot spot with this vibrant show of 36 colors.



**HAYWARD**

[www.haywardnet.com](http://www.haywardnet.com)

**CHROMACORE**



Chromacore® is a registered trademark of Color Kinetics. Hayward® is a registered trademark and ColorLogic™ is a trademark of Hayward Pool Products, Inc. ©2003 Hayward Pool Products, Inc. LIT# CL10318163-dcm-03/03 ???

# More colors. More choices.



Forget about colored lighting as you know it. Now there's new ColorLogic™ from Hayward. Its patented Chromacore® technology combines a microprocessor with the brightest LEDs in the industry to deliver high intensity and an extensive selection of colors. Now pool owners can light up the night with five fixed colors and an unprecedented seven color-changing shows.

## Light up your night.

In addition to using revolutionary Chromacore technology to control color intensity and duration, ColorLogic offers many features you won't find in any other color-lighting option.

Ease of operation has been designed into the microprocessor to offer unmatched simplicity when cycling through the 12 programs with either a single switch or Hayward wireless controls. And with no color wheel or other moving parts, ColorLogic provides noise-free operation. Best of all, ColorLogic takes LED performance to the next level by incorporating the latest in semiconductor technology with a thermoconductor pad and a stainless steel back plate. These three components divert heat away from the LED, reducing the impact of heat on the longevity of the light. No other pool light offers these features to deliver long-lasting performance.



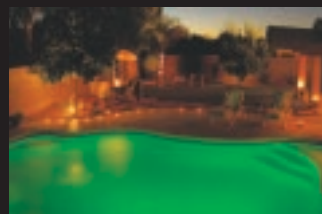




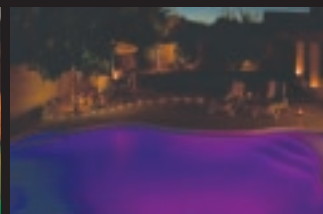
*Deep Blue Sea*



*Afternoon Skies*



*Emerald*



*Sangria*



*Cloud White*

## Benefits that really shine:

ColorLogic from Hayward leads the industry by offering the latest in LED lighting technology, which provides a wide spectrum of color choices, plus unmatched performance through standout benefits like these:

- Sealed unit eliminates the need for service calls –no bulbs to change.
- Ability to synchronize two or more lights.
- Offers the industry's only integrated safety feature of 15 seconds of white light at startup, for added convenience and peace of mind.
- 30-, 50- and 100-foot cords.
- Lower energy-operating costs than halogen and halide.
- Fits in Hayward's in-ground niches.
- 110- and 12-volt options available.



*The streamlined and lightweight unit is easy to install.*

