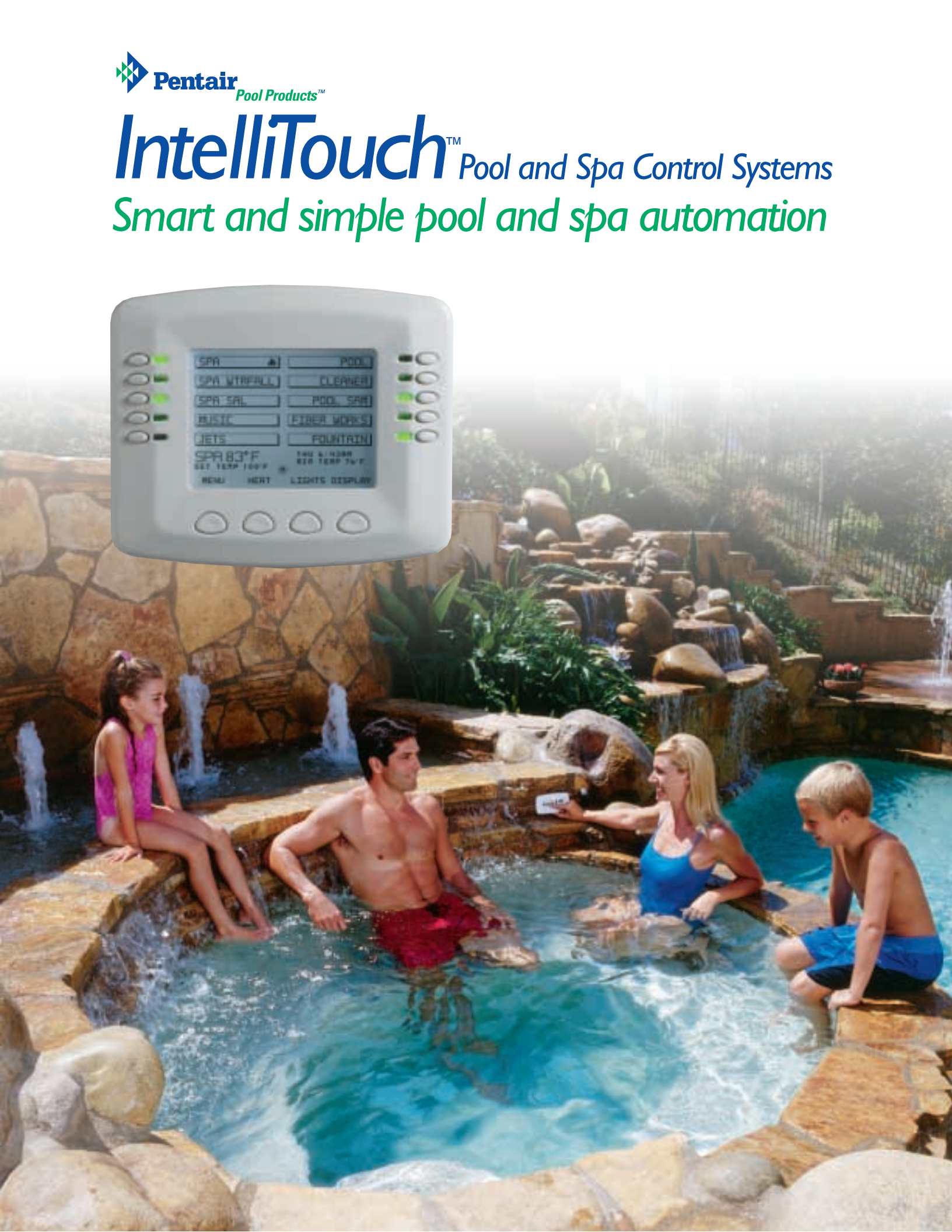




IntelliTouch™ Pool and Spa Control Systems

Smart and simple pool and spa automation



Simple, convenient, and flexible...the truly intelligent pool and spa control system.

IntelliTouch™ is the smart system that makes pool and spa ownership even more relaxing and fun. With its intelligent electronic circuitry and simple programmability, IntelliTouch makes operating and maintaining your pool and spa incredibly easy and absolutely worry-free. With IntelliTouch in control, your pool and spa will operate with peak efficiency and economy—automatically. That's convenience with an intelligent touch. That's the magic of IntelliTouch.

Programming IntelliTouch is easy.

Whether you use one of our preset programs or create your own, IntelliTouch makes it simple to schedule your pool and spa equipment operation. Your pool and spa use differs from day to day, and from weekday to weekend. IntelliTouch makes it easy to match your heating, filtration, and cleaning cycles to your schedule. And, there are no complicated programming menus to memorize.

It remembers for you. IntelliTouch is packed with features that take the worry out of pool and spa operation, such as:

- Count-down timer for automatic shut-off of any circuit protects equipment and saves energy
- Recirculating freeze protection automatically runs your pumps when temperatures plunge
- Automatic pool cleaner lock-out protects cleaner pump while your system is in spa mode
- Display panel alerts you to any problems with the system or sensors, and tells you when service is needed

It makes pool service simple.

Sometimes you can't be home when your pool and spa need maintenance. Your service technician can put IntelliTouch in "Service" mode and run all programs from the outside equipment pad. And the "Time Out" mode allows programs to be interrupted and automatically resumed, so you don't have to worry about reprogramming. IntelliTouch helps service technicians to do a better job of keeping your pool chemistry and equipment in top condition.

It saves you money. Your overall filtration time can be reduced by programming several shorter cycles rather than one longer cycle, and you can schedule your equipment to take advantage of off-peak electrical rates. And with IntelliTouch accessories, you can get intelligent control of money-saving two-speed pumps, as well as highly effective solar heating.

IntelliTouch makes your pool and spa more enjoyable! Now all you have to do is relax, and let IntelliTouch do the rest!



Easy service access: Your service technician can run all programs from the outside equipment pad.



Motorized valves: IntelliTouch systems designed for pool/spa combinations include two valve actuators for convenient pool/spa switching.



Water features: You can add additional valves and actuators to make fountains and waterfalls, all controlled from your IntelliTouch panel.



Fountains: Control fountains and lighting with IntelliTouch auxiliary circuits. Your builder can help choose the system that meets your needs.



Spa spillway: Create a two-stage waterfall from your elevated spa, with no additional pumps or plumbing.



Solar heating option: Add intelligent solar heating control; with IntelliTouch, your existing filter pump is usually all that's needed to pump water through your solar heating system.



Freeze protection: Built-in Freeze-Guard automatically runs your pumps when temperatures plunge. (In climates where pools are winterized, this feature can be switched off.)



Telephone remote control: Preheat your spa from any touch-tone phone.

Controls designed with your convenience in mind.

With their large, sharp, high-resolution screens, IntelliTouch control panels make commands and icons easy to view. Simple menus allow you to create and change programs without the need for complicated sequences. You can even assign your own names to function buttons for easy identification. And multiple panels can be installed in your home or guest house for added convenience.



- Controls up to 40 pool, spa, landscape, and water feature functions
- Sharp resolution with adjustable brightness and contrast
- Back-lighted with auto backlight shut-off
- View at a glance:
 - Pool and spa actual and set temperatures
 - Heating status
 - Air temperature
 - Status of all equipment (up to 10 circuits, including filter pump, heater, automatic cleaner)
 - Time and day
- Function buttons can be custom named for easy identification
- Simple on-screen menus and easy navigation make programming a snap!



Mobile Touch wireless control

Operate and program your equipment from your pool, spa, or even your lounge chair...anywhere from within 300 feet of your power center. The Mobile Touch has all the functionality of the indoor control panel, including the large, high-resolution LCD screen.

Mobile Touch is water resistant, includes AC wall adapter, and has auto-recharging lithium-ion batteries. It's a great solution for adding a control system to an already-existing pool and spa. And, when you combine the Mobile Touch with your indoor control panel, you'll have the ultimate package for convenience and flexibility.



Create beautiful pools, spas, water features, and landscaping with these Pentair lighting systems...and automate them with IntelliTouch.

FIBERworks™, the world's most advanced fiber optic pool and landscape lighting systems.

Spectrum Amerlite (SAm™) automated color lighting, the first variable color underwater lighting for pools and spas. SAm allows you to bathe your pool in a custom color or slowly roll through the entire color spectrum. You can even synchronize multiple lights to provide spectacular wall-to-wall color. With multiple SAm lights and our unique Swimming Colors™ feature, colors transform as they move across the water.

SAL™ automated color spa lighting utilizes the same revolutionary color technology as the Spectrum Amerlite, but in an exclusive compact design for spas.

Operate your IntelliTouch System from your home, pool, or spa with these remote control options:



Four Function Spa-side Remote

- Installs in spa deck or tile
- Controls any four circuits such as spa, jets, spa lights, pool lights
- L.E.D. lamp indicates Heating and Spa modes



Ten Function Spa-side Remote

- Installs in spa deck or tile, semi-flush or surface-mount
- Controls any ten circuits such as spa, jets, spa lights, pool lights, air blower, fiber optic lighting, lighting color wheels, and more
- L.E.D. temperature display
- Thermostatic temperature control
- L.E.D. indicators for all buttons



Wireless Remote

- Controls any four circuits such as spa, jets, spa lights, pool lights
- Control pool and spa operation from anywhere within 150 feet



There is an IntelliTouch system for every application—swimming pools, pool and spa combinations, custom spas, and pools with separate spas. With control circuits from five to forty and beyond, there's no project too large or too small for IntelliTouch.

The Family of IntelliTouch Systems

Systems and Features

	IntelliTouch i5 Pool/Spa Combo	IntelliTouch i7+3 Pool/Spa Combo	IntelliTouch i9+3 Pool/Spa Combo	IntelliTouch i5.1 Pool or Spa	IntelliTouch i10+3S Pool or Spa	IntelliTouch i10+3D Separate Pool/Spa	IntelliTouch i10X Expansion Center	IntelliTouch i5X Expansion Center
Filter pump control	S	S	S	S	S	S	N	N
Pool/Spa control of 2 motorized valves	S	S	S	N	N	N	N	N
Digital thermostatic heater control	S	S	S	S	S	S	S	S
Aux 1 control circuit	S	S	S	S	S	S	S	S
Aux 2 control circuit	S	S	S	S	S	S	S	S
Aux 3 control circuit	S	S	S	S	S	S	S	S
Aux 4 control circuit	S	S	S	S	S	S	S	S
Aux 5 control circuit	N	S	S	N	S	S	S	S
Aux 6 control circuit	N	S	S	N	S	S	S	N
Aux 7 control circuit	N	N	S	N	S	S	S	N
Aux 8 control circuit	N	N	S	N	S	S	S	N
Aux 9 control circuit	N	N	N	N	N	N	S	N
Aux 10 control circuit	N	N	N	N	N	N	S	N
Valve control from Aux circuit or solar	S	S	S	S	S	S	S	S
Valve control from Aux circuit	S	S	S	O	O	S	S	S
Aux Valve 1 control circuit for motorized valve	N	S	S	N	S	S	S	S
Aux Valve 2 control circuit for motorized valve	N	S	S	N	S	S	S	S
Aux Valve 3 control circuit for motorized valve	N	O	O	N	O	O	O	O
Aux Valve 4 control circuit for motorized valve	N	O	O	N	O	O	O	O
Aux Valve 5 control circuit for motorized valve	N	O	O	N	O	O	O	O
24-hour/7-day programming of any circuit	S	S	S	S	S	S	S	S
Count-down timer (egg timer) of any circuit	S	S	S	S	S	S	S	S
SAm/SAL color-changing light sync control	S	S	S	S	S	S	S	S
Swimming color/color-set SAm/SAL light control	N	N	S	N	S	S	S	S
Solar heating or heat pump control	O	O	O	O	O	O	N	N
2-Speed pump control	O	O	O	O	O	O	O	O
LCD brightness/contrast adjustment	S	S	S	S	S	S	S	S
L.E.D. indicators with 4 brightness levels	S	S	S	S	S	S	S	S
Up to 40 Aux circuits, 20 Valve circuits	N	N	O	N	O	O	O	N

S-Standard O-Optional N-Not available

Pentair Pool Products...bringing you the best of everything in swimming pool equipment



Pumps

The most reliable high-performance pumps for every pool, spa, and water feature.

Filters

The ultimate in filtration equipment to keep pools sparkling clean with a minimum of maintenance. A complete family of filters for all inground and aboveground pools.

Heaters

The most compact, reliable and efficient swimming pool heaters, with a complete line of inground, aboveground, and spa models.

Lighting Systems

Color changing underwater illumination systems, plus the best in fiber optics and lighting accessories for inground and aboveground pools.



Automatic Cleaners

The world's first choice. Models for inground and aboveground pools.

Pool Maintenance Products

The number one name in cleaning equipment and accessories from chlorinators to vacuum heads.

Pentair products are known as the dependability leaders, engineered for years of efficient and reliable service.

Contact your pool professional for more information about quality pool products from Pentair.



*Because **reliability** matters most*

Phone: 800-831-7133 • Fax: 800-284-4151
www.pentairpool.com